





SCHOOL BASED DIVERSION


A Model Pathway for At Risk Youth with Behavioral Health Needs

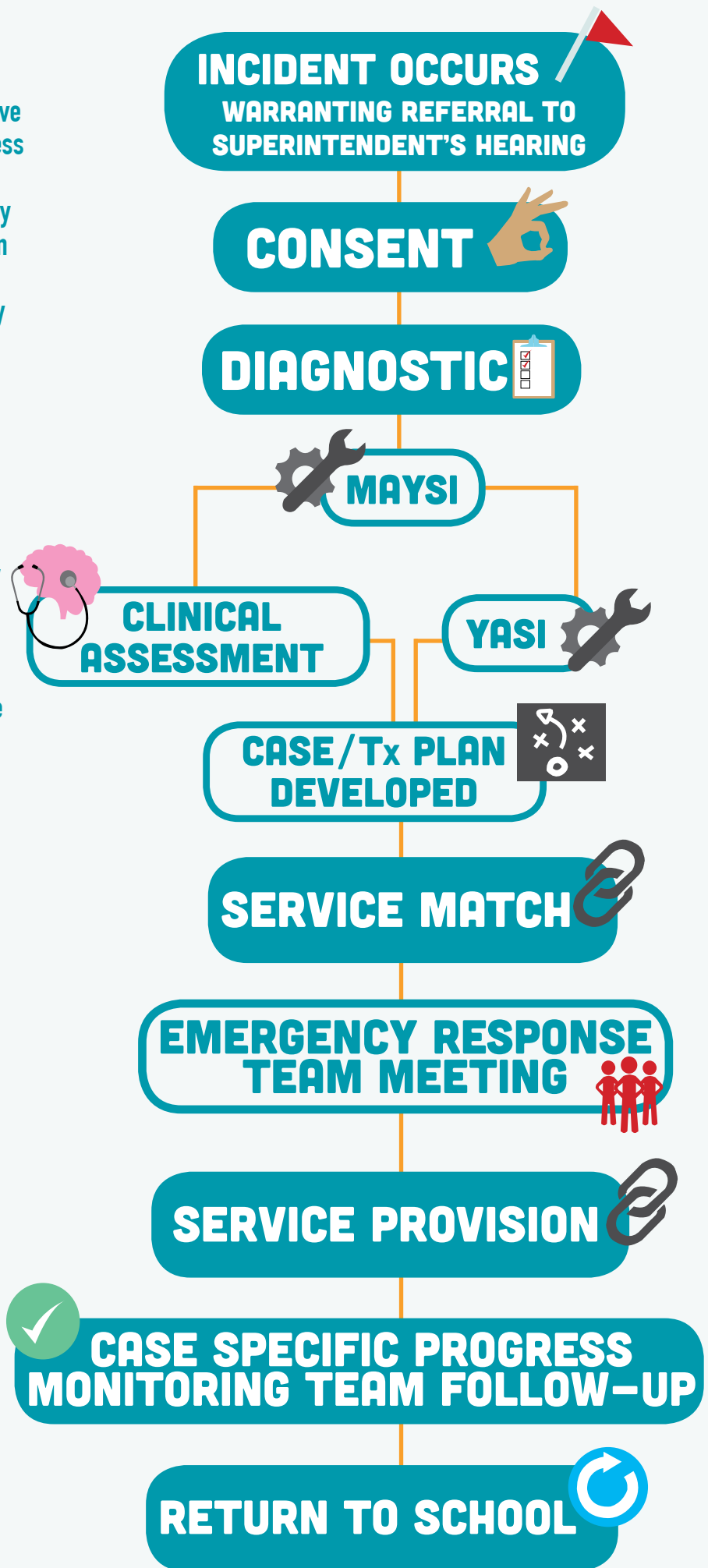
 Youth referred to a Superintendent's Hearing are given the opportunity to enter an alternative pathway that provides the opportunity to access mental and behavioral health services and potentially reduce the amount of time that they are removed from school. If after a discussion of this process (that includes a parent and/or guardian) this option is refused, students may choose to 'opt in' later in the process.

 A social worker will present youth & their guardians with the opportunity to consent to the alternative pathway within 5 days of the initial offense.

 Students who opt in to the alternative pathway will receive a full MAYSI screen (a screening for mental health tool to identify possible needs). If a youth is identified as having mental health needs by the MAYSI, they will be referred to a clinician for a clinical assessment. If the youth does not display mental health needs on the MAYSI, they will receive the YASI (risk, needs, and protective factors assessment) to inform case planning.

 Students who are referred to a clinical assessment based on the MAYSI will receive diagnostic information and case/treatment plan recommendations from the clinician. Students who receive the YASI instead will receive case planning services from a school social worker. Either the clinician or the school social worker will match/refer the student to appropriate community-based services.

 The Emergency Response Team (ERT) will create an agreement with the student that links compliance with recommended services to reduced time out-of-school. An extended ERT will continue monitoring progress and determine when the youth is ready to return to school.



INCIDENT OCCURS
WARRANTING REFERRAL TO
SUPERINTENDENT'S HEARING

CONSENT

DIAGNOSTIC

MAYSI

**CLINICAL
ASSESSMENT**

YASI

**CASE/Tx PLAN
DEVELOPED**

SERVICE MATCH

**EMERGENCY RESPONSE
TEAM MEETING**

SERVICE PROVISION

**CASE SPECIFIC PROGRESS
MONITORING TEAM FOLLOW-UP**

RETURN TO SCHOOL